



Health Care
Doctor
Hospital
Pharmacist
Nurse
Dental
First Aid
Surgeon
Emergency

MEDICAL

MEDICAL

MEDICAL

MEDICAL

MEDICAL

 **Vermont Association
of Hospitals
and Health Systems**
Network Services Organization

Readmissions reporting

Sean Judge – Director of Health Care Data Services

Vermont Association of Hospitals and Health Systems Network Services Organization



WHO WE ARE

The Vermont Association of Hospitals and Health Systems – Network Services Organization (VAHHS-NSO) provides comprehensive data services to health care providers in support of their work towards financial sustainability, quality improvement, and health care reform. VAHHS-NSO has facilitated hospital discharge data collection for the State of Vermont for over 25 years.

With data from all Vermont hospitals, NSO is uniquely positioned to provide comparative analysis to the entire Vermont hospital system, adding insight into performance and trends.



WHAT WE CAN DO FOR YOU

- Secure, web-based interactive reporting library
- Custom report development
- Data extracts to support your internal teams, vendor contracts or quality improvement projects

In addition to serving our members, NSO assists with the following:

- Analysis and reporting in support of policy and public relations initiatives
- Data extracts for the Healthcare Cost and Utilization Project (HCUP), run by the Federal Agency for Healthcare Research and Quality. HCUP is a comprehensive source of hospital care data, including information on in-patient stays, ambulatory surgery and services visits, and emergency department encounters.

Discharge Data Flows

Patient Demographics

ICD Diagnosis Codes

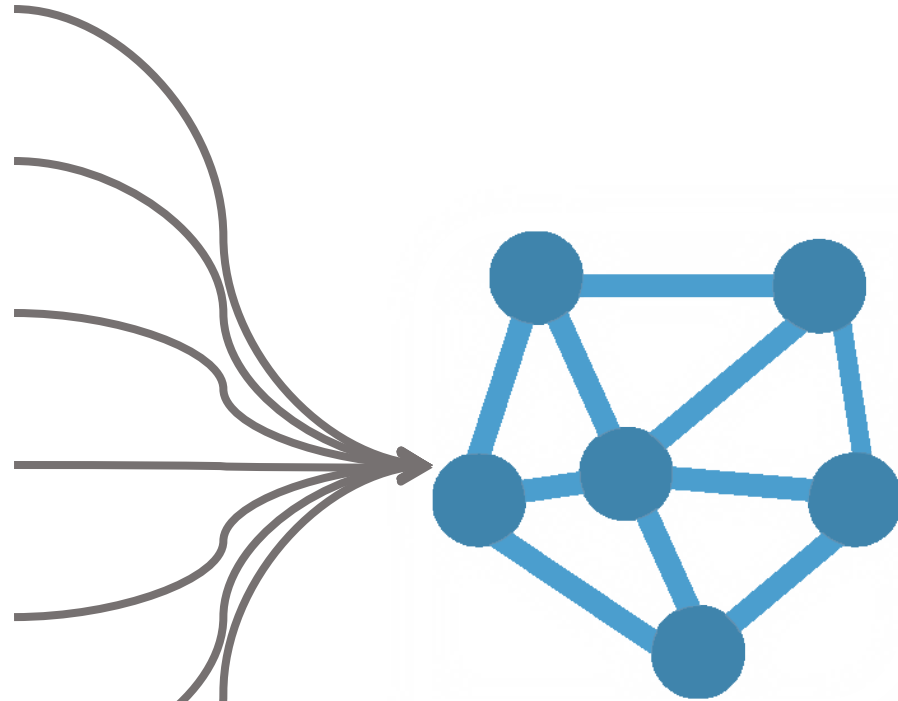
DRG Codes

Procedure Codes

Revenue Codes

Admit/Discharge Dates

Charges



NSO Data Warehouse

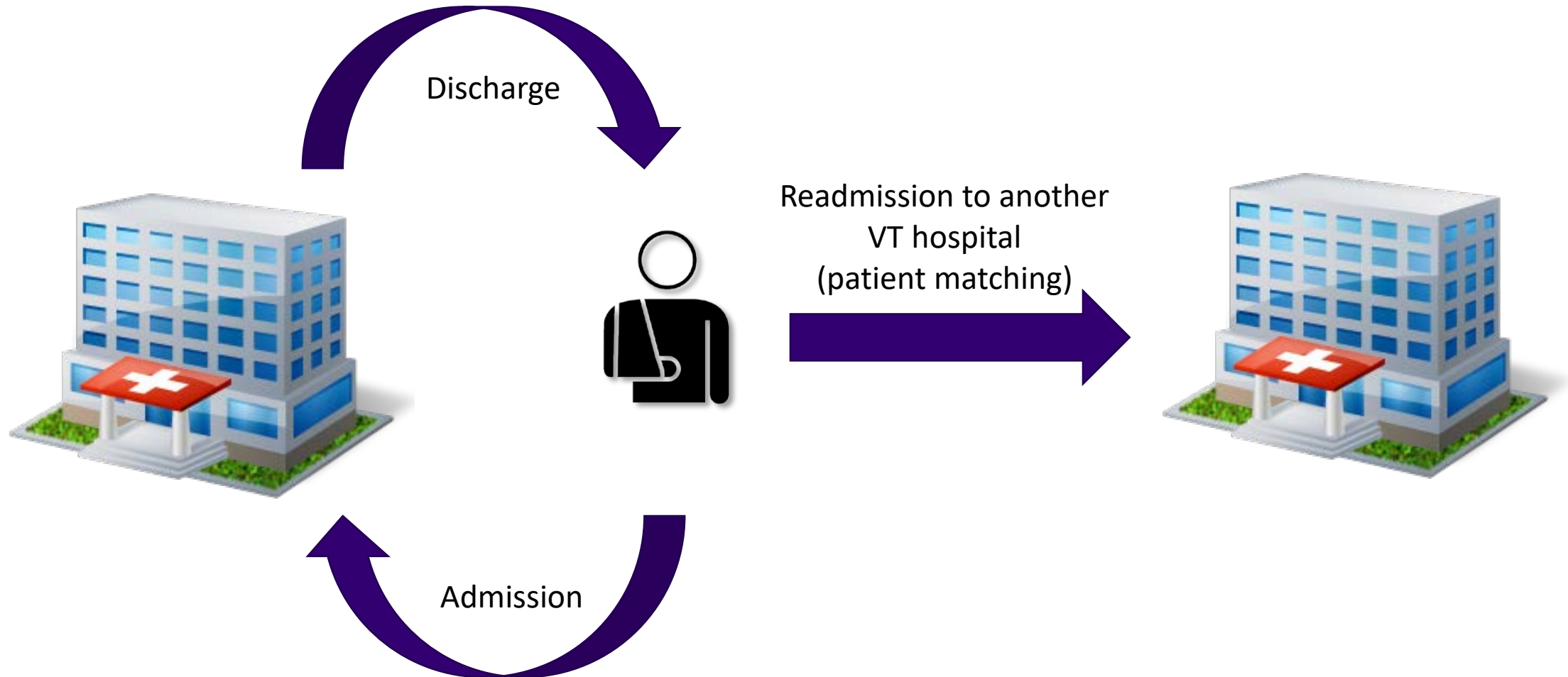


Hospital Reporting

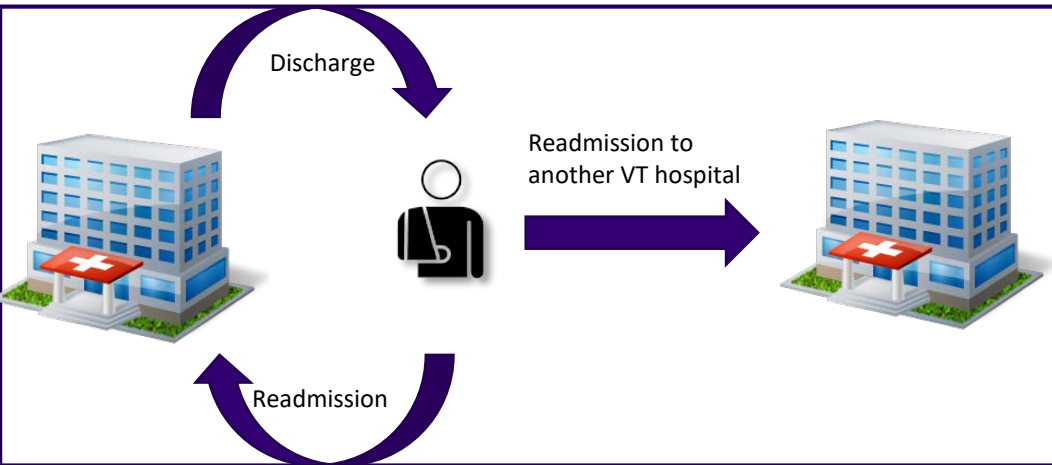


VUHDDS

Readmissions data



Readmissions Reporting



- Time frame
- Same or all cause
- Days to readmission
- Same or different hospital
- Discharge disposition
- MDC/DRG/Diagnosis code



Readmission trend analysis compared to peers (CAH and PPS)

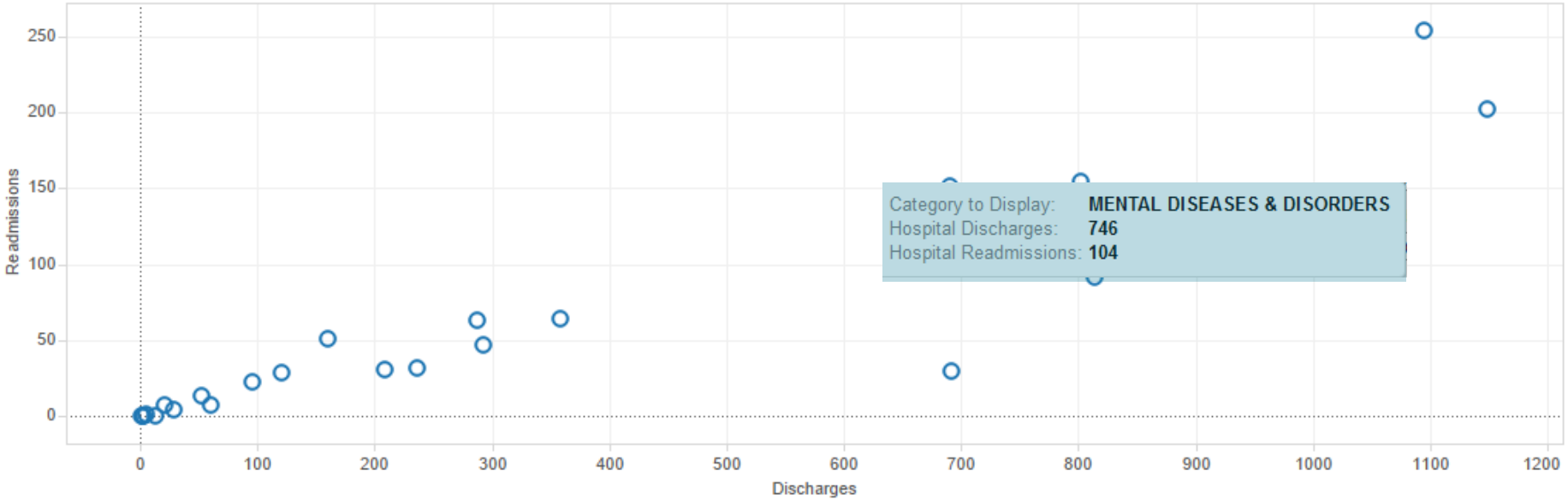


Patient Group

NSO Readmissions Tool

Year: (Multiple values) | Month: (All) | Days to Readmit: 30 | Readmitted To: Any Organization | Readmission Type: All Cause | Category Select: MDC

CVMC Readmissions vs Discharges by MDC, 2015 & 2016



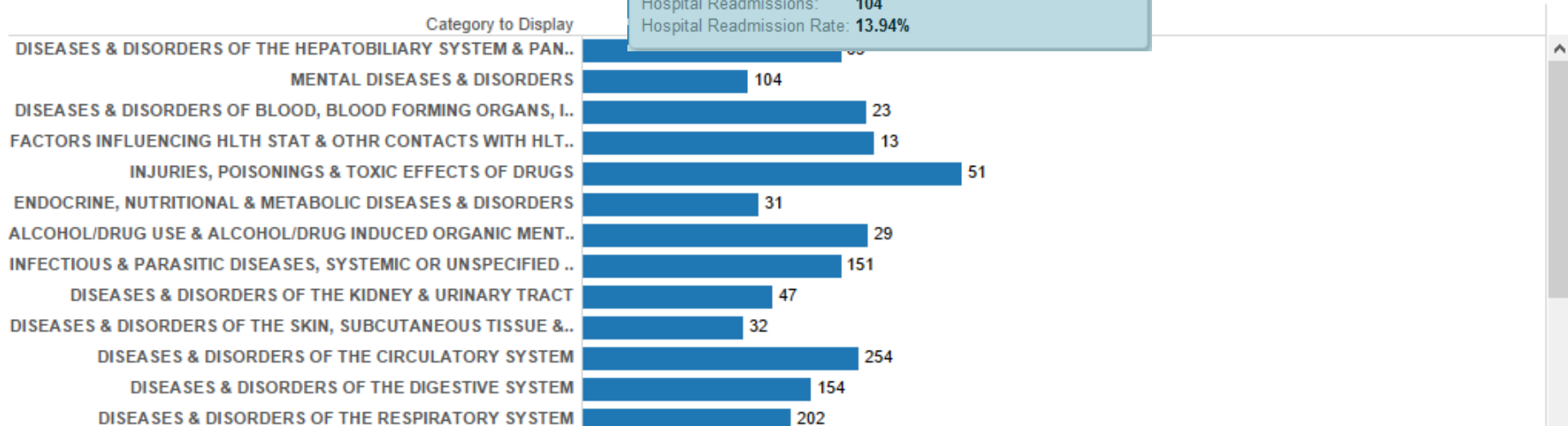
Category to Display: **MENTAL DISEASES & DISORDERS**
 Hospital Discharges: 746
 Hospital Readmissions: 104

Discharge Disposition: (All)
 Discharge MDC Desc: (All)
 Discharge DRG Desc: (All)
 Discharge Diagnosis Desc: (All)
 Discharge Diagnosis Group: (All)
 Discharge AMI: (All)
 Discharge CHF: (All)
 Discharge PN: (All)
 Payer: (All)

Click any of the markers on the scatterplot above to highlight the MDC on the bar graph below.

Click any white space on scatterplot to reset.

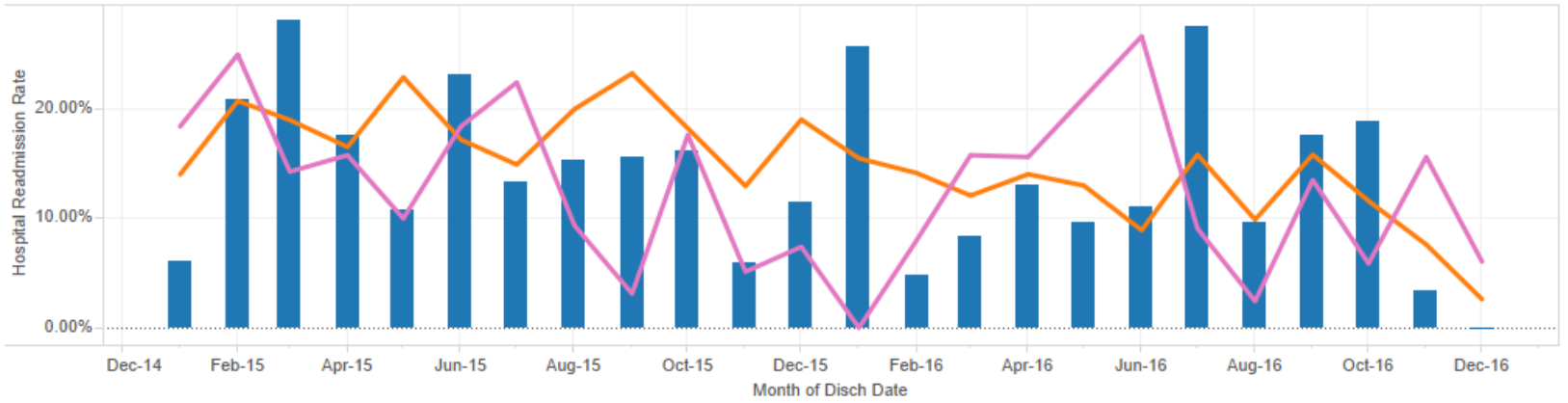
Readmissions by MDC





Year of Disch Da.. Month of Disch Date Days to Readmit Readmitted To Readmission Type Discharge Diagnosis Group
 (Multiple val... (All) 30 Any Organization All Cause (All)

Hosp vs CAH and PPS Readmission Rates, 2015 & 2016



Click any blue bar on the bar graph above to view record level detail for that month.

Click white space to reset month/record level detail filter.

■ Hospital Readmission Rate
 ■ CAH Readmission Rate
 ■ PPS Readmission Rate

Hosp vs CAH and PPS Data Table

Year of Di..	Month of Dis..	Hospital Disch..	Hospital Read..	Hospital Read..	CAH Discharg..	CAH Readmis..	CAH Readmis..	PPS Discharges	PPS Readmiss..	PPS Readmiss..
2016	January	35	9	25.71%	28.0	0.0	0.00%	129	20	15.50%
	February	21	1	4.76%	25.0	2.0	8.00%	113	16	14.16%
	March	36	3	8.33%	38.0	6.0	15.79%	124	15	12.10%
	April	23	3	13.04%	32.0	5.0	15.63%	121	17	14.05%
	May	31	3	9.68%	38.0	8.0	21.05%	123	16	13.01%
	June	27	3	11.11%	30.0	8.0	26.67%	112	10	8.93%
	July	29	8	27.59%	33.0	3.0	9.09%	101	16	15.84%
	August	31	3	9.68%	41.0	1.0	2.44%	101	10	9.90%
	September	34	6	17.65%	37.0	5.0	13.51%	101	16	15.84%
	October	37	7	18.92%	34.0	2.0	5.88%	112	13	11.61%
	November	30	1	3.33%	32.0	5.0	15.63%	105	8	7.62%
	December	32	0	0.00%	33.0	2.0	6.06%	115	3	2.61%
2015	January	33	2	6.06%	38.0	7.0	18.42%	114	16	14.04%
	February	24	5	20.83%	32.0	8.0	25.00%	106	22	20.75%
	March	32	9	28.13%	35.0	5.0	14.29%	121	23	19.01%
	April	34	6	17.65%	38.0	6.0	15.79%	139	23	16.55%
	May	37	4	10.81%	30.0	3.0	10.00%	144	33	22.92%
	June	33	5	15.15%	32.0	4.0	12.50%	139	22	15.83%

Discharge MDC Desc (All)
 Discharge DRG Desc (All)
 Discharge AMI (All)
 Discharge CHF (All)
 Discharge PN (All)
 Payer (All)
 Discharge Disposition (All)



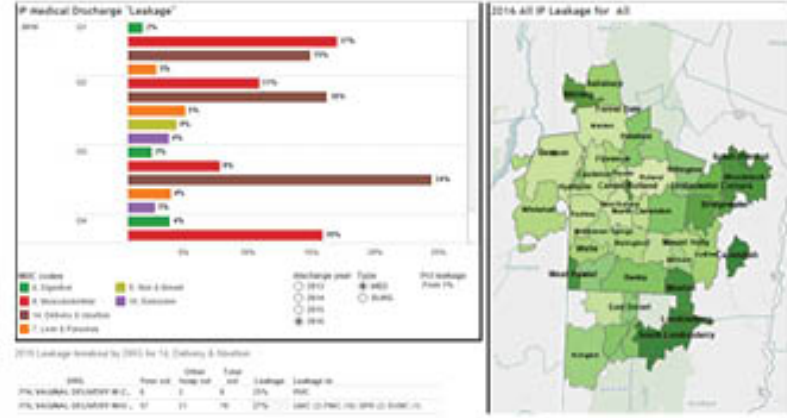
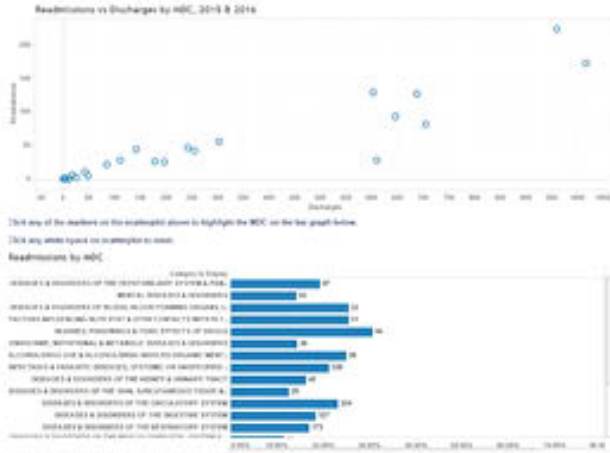
Disch Date
2015
August

Category to Display	Discharge Account Number	Days To Readmit	Readmission Account Number	1	3	4	5	6	7	8	9	10	11	12	13	15	16	17	18	20	21	23	24	25	26	27	28	
ALCOHOL/DRUG USE & ALCOHOL/DRUG INDUCED ORGANIC MENTAL DISORDERS	VAHHS7200000	0	VAHHS7200000						1																			
	VAHHS7200100	30	VAHHS7200100										1															
DISEASES & DISORDERS OF THE CIRCULATORY SYSTEM	VAHHS7201100	9	VAHHS7201100	1																								
	VAHHS7210000	26	VAHHS7210000	1																								
	VAHHS7220000	9	VAHHS7220000					1																				
	VAHHS7221000	5	VAHHS7221000			1																						
	VAHHS7221017	4	VAHHS7221017				1																					
	VAHHS7222000	1	VAHHS7222000		1																							
	VAHHS7223000	3	VAHHS7223000							1																		
	VAHHS7223000	13	VAHHS7223000							1																		
	VAHHS7260000	19	VAHHS7260000									1																
	VAHHS7260172	0	VAHHS7260172										1															
	VAHHS7260176	1	VAHHS7260176												1													
	VAHHS7400000	28	VAHHS7400000																		1							
	VAHHS7411000	11	VAHHS7411000																			1						
	VAHHS7412000	0	VAHHS7412000																							1		
	VAHHS7412000	16	VAHHS7412000																							1		
	VAHHS7412000	11	VAHHS7412000																								1	
	VAHHS7412011	16	VAHHS7412011																								1	
	DISEASES & DISORDERS OF THE DIGESTIVE SYSTEM	VAHHS7501100	3	VAHHS7501100							1																	
		VAHHS7501100	6	VAHHS7501100												1												
VAHHS7501171		4	VAHHS7501171										1															
VAHHS7504127		1	VAHHS7504127												1													
VAHHS7505000		12	VAHHS7505000																			1						
VAHHS7505011		11	VAHHS7505011																							1		
VAHHS7507100		6	VAHHS7507100																									
DISEASES & DISORDERS OF THE HEPATOBILIARY SYSTEM & PANCREAS	VAHHS7508100	19	VAHHS7508100																		1							
	VAHHS7508100	27	VAHHS7508100																			1						
	VAHHS7508100	12	VAHHS7508100																							1		
DISEASES & DISORDERS OF THE KIDNEY & URINARY TRACT	VAHHS7514001	1	VAHHS7514001	1																								
	VAHHS7512700	26	VAHHS7512700	1																								
	VAHHS7518000	18	VAHHS7518000	1																								
DISEASES & DISORDERS OF THE MUSCULOSKELETAL SYSTEM & CONN TISSUE	VAHHS7520000	3	VAHHS7520000																							1		
	VAHHS7522000	28	VAHHS7522000					1																				
DISEASES & DISORDERS OF THE NERVOUS SYSTEM	VAHHS7528100	15	VAHHS7528100																						1			
	VAHHS7602000	0	VAHHS7602000																							1		
DISEASES & DISORDERS OF THE RESPIRATORY SYSTEM	VAHHS7607100	0	VAHHS7607100																							1		
	VAHHS7614070	3	VAHHS7614070		1																							
	VAHHS7617070	11	VAHHS7617070										1															

Caption
Hospital readmissions are not double counted. The high level and detail reports count duplicate readmission account numbers as 1 readmission. However, for the purposes of transparency all account numbers,

MARKET SHARE

Show the potential loss ("leakage") resulting from patients in your service area seeking care at a different Vermont hospital. Summary by quarter over any year surfaces potential trends. Detail by DRG code allows you to focus on a specific procedure group and includes the facility where the patient received care.



HEALTH CARE REFORM and QUALITY

Are your readmission rates in line with your goals? Leveraging data collection from all Vermont hospitals, the readmission report will assist in better understanding patient readmission trends. Detail levels include comparison against CAH and PPS hospital groups as well as patient ID.

HEALTH CARE POLICY INITIATIVES

How can your hospital respond to new and ever changing health care policy initiatives? Using comparative analysis from all Vermont hospitals, NSO data provides insight into performance and trends, best practices and more.





Questions



Health Care
Doctor
Hospital
Pharmacist
Nurse
Dental
First Aid
Surgeon
Emergency

MEDICAL

MEDICAL

MEDICAL

MEDICAL

MEDICAL

 **Vermont Association
of Hospitals
and Health Systems**
Network Services Organization

Thank you!

Sean Judge – sean@vahhs.org – 223-3461 x108
Matt Griffith – matt@vahhs.org – 223-3461 x115